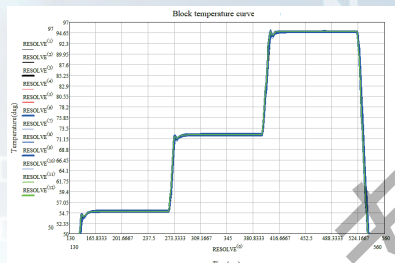
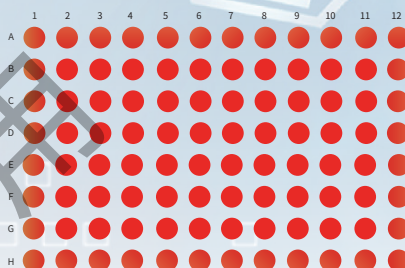


## Product Features



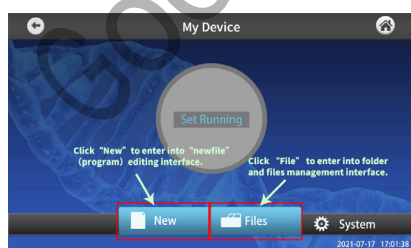
Fast ramping rate: to 5.5 °C/s, saving valuable experimental time



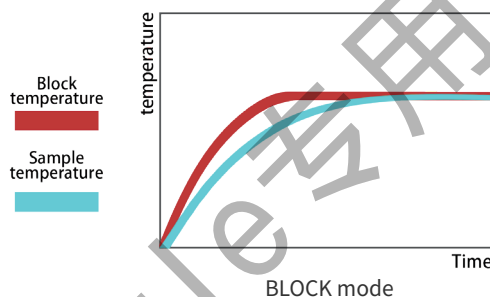
Stable temperature control: industrial semiconductor temperature control system leads to accurate temperature control and great uniformity between wells



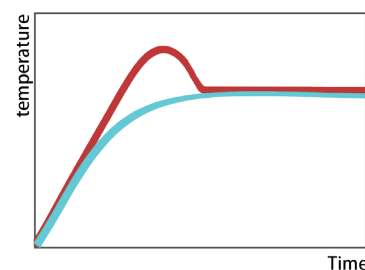
Various functions: flexible program setting, adjustable time, temperature gradient, and temperature change rate, built-in Tm calculator



Easy to use: Built-in graph-text quick operation guide, suitable for operators with various backgrounds



BLOCK mode



TUBE mode

Dual-mode temperature control: TUBE mode automatically simulates the actual temperature in the tube according to the reaction volume, which makes the temperature control more accurate; The BLOCK mode directly displays the temperature of the metal block, applicable to the small volume reaction system, and takes shorter time in same program

## Software Interface



## Product Comparison



FC-96B

- ▶ Manual hot lid, high-strength mechanical buckle, not easy to wear
- ▶ Small size, light weight, suitable for various complex experimental environments
- ▶ Unique rear air outlet design, multiple machines can be placed side by side without difficult heat dissipation

## Application Scenario

